



with Integrity Block



Shown: Premium Landscape Line, Brushed Face in Sedona Red

Learn the Facts

- ▶ Conventional block products are made of concrete, which is the second most consumed substance on the planet after water.
- ▶ Cement, used in concrete, accounts for 5-6% of all CO<sub>2</sub> emitted into the atmosphere.
- ▶ 4.6 million BTUs of energy are consumed to make one ton of cement.
- ▶ The concrete industry uses over 1 trillion gallons of water each year worldwide, not including wash and curing water.

Green Blocks Count

Integrity Block takes the environment seriously, and every block counts. Take a look at these great savings by using Integrity Block. \*



Water Savings  
15%



CO<sub>2</sub> Savings  
39%



Energy Savings  
40%



Recycled Content  
Up to 50%

Green Your Landscape

- ▶ **Natural Finish** - Integrity Block landscape blocks offer natural soil colors (no dyes) and are available in smooth or brushed face.
- ▶ **Easy to Install** - Integrity Block landscape blocks are a simple stack design for easy installation in straight or curved wall designs.
- ▶ **Lasting Strength** - Integrity Block landscape blocks are as strong as concrete, while minimizing the impact on the environment.
- ▶ **Take the LEED** - Integrity Block can contribute LEED credits for both commercial and residential projects. \*\*

\* Average Integrity Block compared with concrete mix of 12.5% cement, 26.6% coarse aggregate, and 60.9% fine aggregate by weight. Integrity Block does not use "washed" sands and aggregates, saving an estimated 30 gallons of water per ton of washed material. \*\* Credits vary and depend on your project; check www.usgbc.org for details.

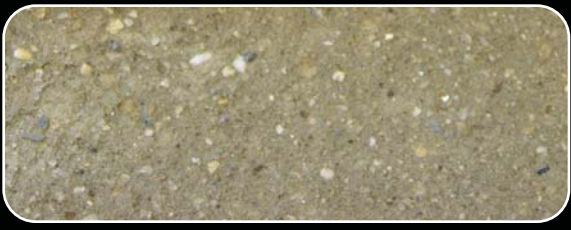
## Premium Landscape - Color Options



Landscape: Sedona Red



Landscape: Sahara Tan



Landscape: Gray



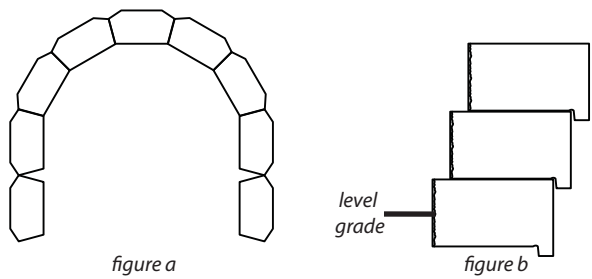
Landscape: Natural Brown

All Integrity Block products are made of a natural soils composite and although we have made best efforts to capture the colors in this brochure, colors may vary. We recommend reviewing color options in person for accurate representation.

## Specifications

Block Size: 8W x 5H x 16L  
Setback: Automatic 12°  
Approx. Weight: Sedona Red, 30 lbs.  
Sahara Tan, 40 lbs.  
Gray, 40 lbs.  
Natural Brown, 33 lbs.  
# Per Pallet: 60

## Installation Tips



- Maximum wall height *should not exceed 3'*
- Walls can be installed in straight or curved configurations as shown above (fig. a)
- First course of Integrity Block should be placed a minimum of 2" below grade (fig. b)
- Blocks should be stacked setback (fig. b) as shown and backfilled as you go.
- For more installation tips and information visit, [www.integrityblock.com/installation](http://www.integrityblock.com/installation)



## INTEGRITY BLOCK™

4966 El Camino Real, Ste. 223  
Los Altos, CA 94022  
Ph. 650.641.3104 Fx. 650.963.1544  
[www.integrityblock.com](http://www.integrityblock.com)

Eco-printed on recycled paper using soy inks by GreenerPrinter.com

# BUILD GREEN



## LANDSCAPES

with  
**Integrity Block**

